
8101 West
Quinault Avenue
Suite 102
Kennewick WA

Office Space For Lease

Kirt Shaffer 509.521.9183
kirt@tippettcompany.com



Owner: John and Nancy Westford

Parcel Number: 1-3199-101-3019-002

Parcel Size: 0.36 acres

Square Footage.: 1,418 u.s.f.
1,675 r.s.f.

Year Built: 2006

Zoning: Commercial Regional

Lease Price: \$15.00/s.f.

Lease Type: NNN (\$5.00/s.f.)

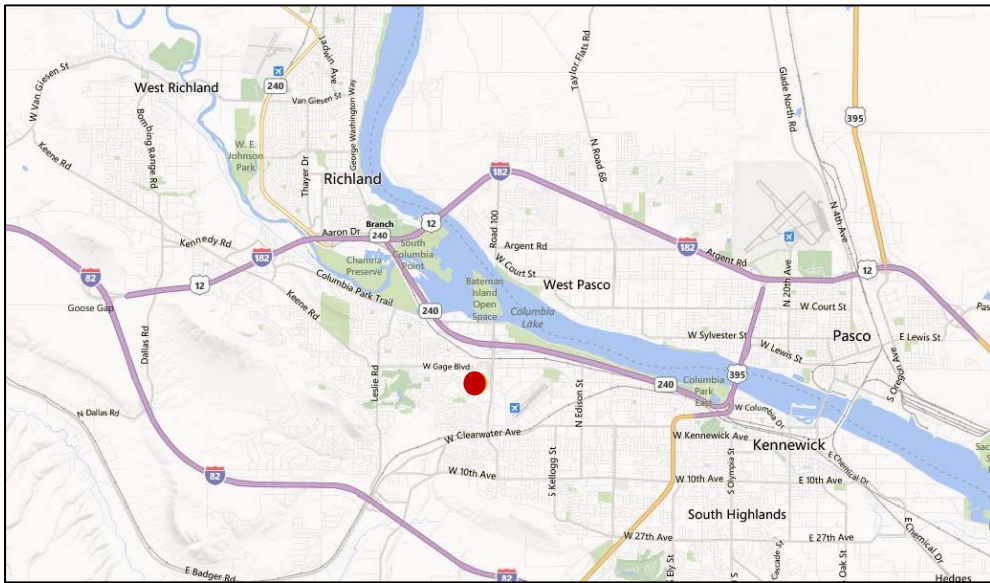
Turn-key office space, centrally located to Columbia Center and in the Central Business District. Space is built-out and ready for immediate occupancy.

CONTACT:

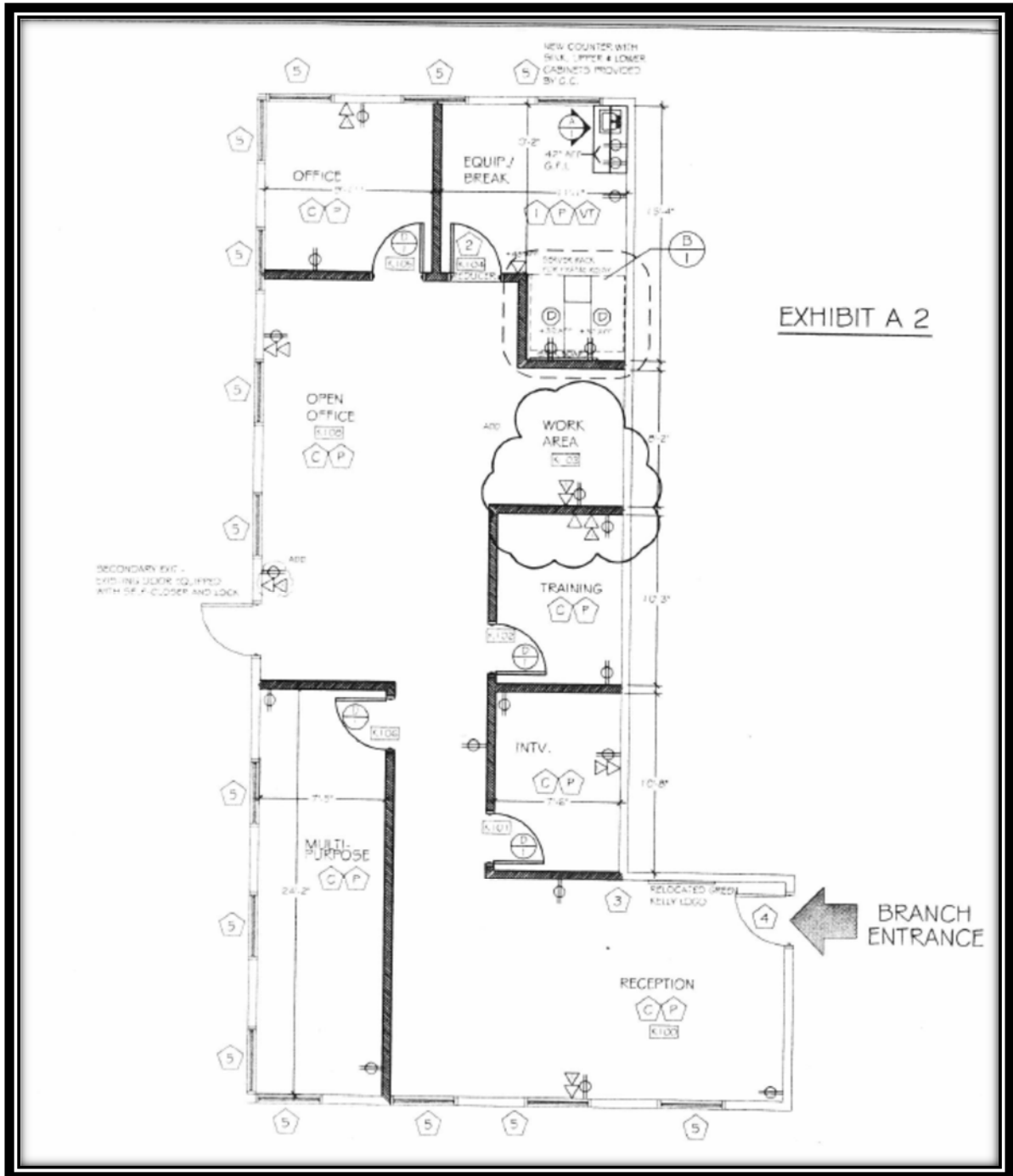
Tippett Company
2815 St. Andrews Loop, Suite F
Off: 509.545.3355
Fax: 509.545.1689
www.tippettcompany.com

Kirt Shaffer / Managing Broker
509.521.9183
kirt@tippettcompany.com

No warranty or representation, expressed or implied, is made as to the accuracy of information contained herein, and same is submitted subject to errors, omission, change of price, rental or other conditions and withdrawal without notice. Buyer and his/her agent are responsible for independently verifying all presented information.



No warranty or representation, expressed or implied, is made as to the accuracy of information contained herein, and same is submitted subject to errors, omission, change of price, rental or other conditions and withdrawal without notice. Buyer and his/her agent are responsible for independently verifying all presented information.



No warranty or representation, expressed or implied, is made as to the accuracy of information contained herein, and same is submitted subject to errors, omission, change of price, rental or other conditions and withdrawal without notice. Buyer and his/her agent are responsible for independently verifying all presented information.