
Lease Offering

9825 Sandifur Parkway,
Suite C, Pasco WA

Tippett Company
2815 St. Andrews Loop,
Suite F, Pasco WA 99302
509.545.3355



9825 Sandifur Parkway – Suite C

Class A office suite for lease located in the Broadmoor Professional Center, Pasco WA.

| | |
|------------------------|--|
| Owner: | Tippett Land & Mortgage Company |
| Building Users: | A multi-tenant office building to include the vacant suite offered for lease. The neighboring tenants include counseling services and other professional office tenants. |
| Suite C Size: | 1,201.00 Usable Sq. Ft. 1,404.30 Rentable Sq. Ft. |
| Lease Rate: | \$18.00 PSF Base Rent |
| Term: | 5 years |
| Lease Type: | NNN – Tenant pays taxes, common area maintenance and insurance. |
| 2020 NNN's: | \$6.53 PSF |
| Utilities: | Electric and Gas – Tenant pays service providers directly. |

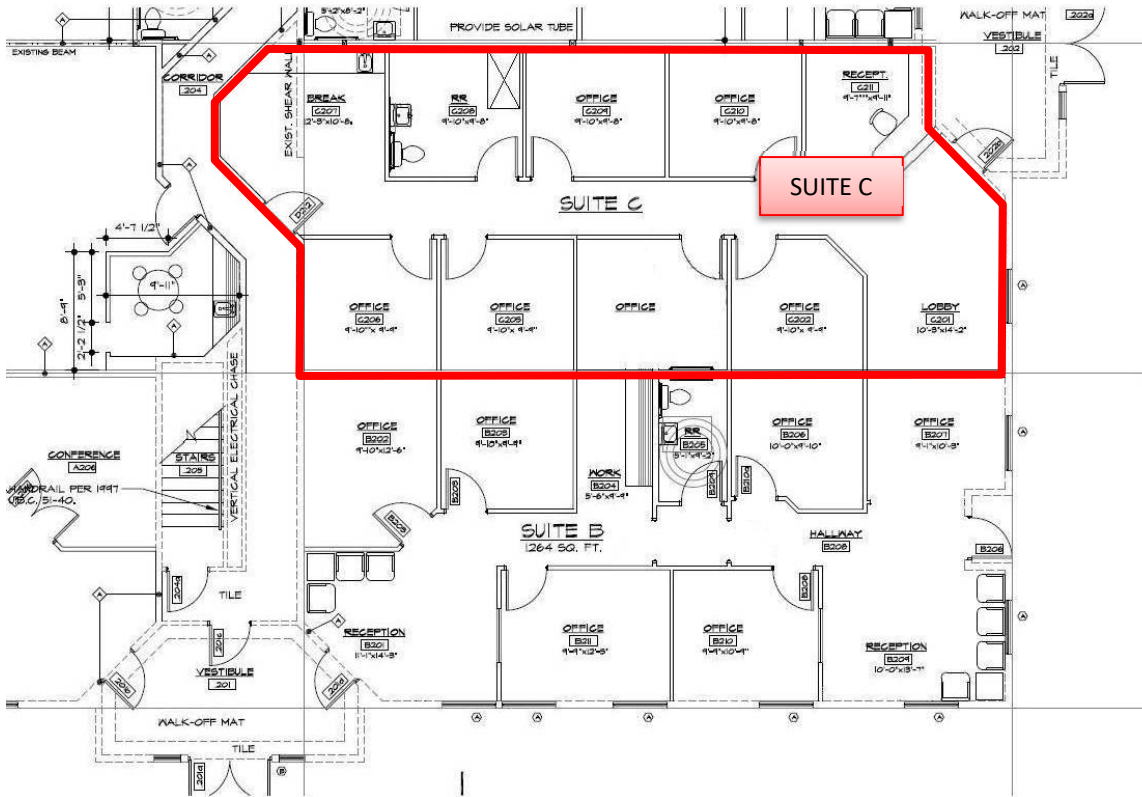
**Property is Broker owned.

CONTACT:

Tippett Company
2815 St. Andrews Loop, Suite F
Off: 509.545.3355
Fax: 509.545.1689
www.tippettcompany.com

Kirt Shaffer / Managing Broker
509.521.9183
kirt@tippettcompany.com

Priscely G. de Campos / Broker
509.591.5676
priscely@tippettcompany.com



9825 Sandifur Parkway, Suite `C



9825 Sandifur Parkway, Suite `C